

SUN EARTH®

PV-MODULE 190/195 W_p
MONOCRYSTALLINE TDB 125×125-72-P



- HIGH PERFORMANCE SILICON MODULES
- CERTIFIED WITH IEC STANDARDS
- 100 % INTEGRATED QUALITY CONTROL BY SiG SOLAR GMBH
- GERMAN PERFORMANCE AND PRODUCT WARRANTY
- 10 YEARS PRODUCT WARRANTY
- 25 YEARS 80 % PERFORMANCE WARRANTY
10 YEARS 90 % PERFORMANCE WARRANTY
- POWER TOLERANCE -0W UP TO +5W
- MODULE EFFICIENCY 15,3 % (195 W_p)
- SUN EARTH IS PV CYCLE MEMBER (2013)



SiG Solar GmbH
Ernst-Abbe-Straße 6
D-28816 Stuhr
T + 49 (0) 421.278 37 77
F + 49 (0) 421.278 37 79

info@sigsolar.com
www.sigsolar.com

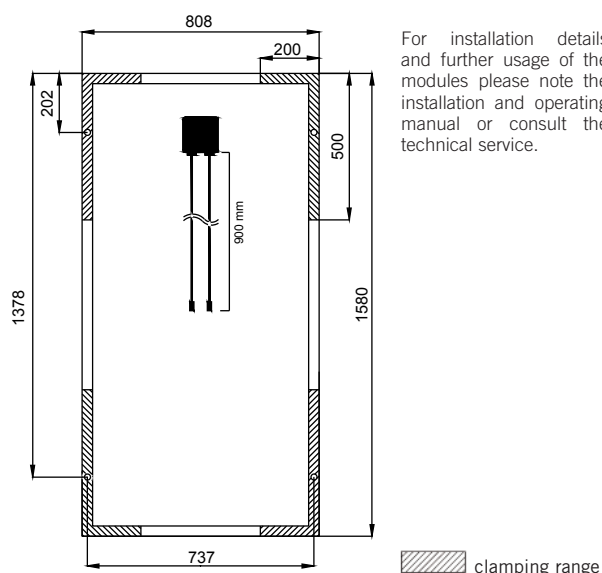
SUN EARTH by **SiG**
Energie natürlich mit Service **SOLAR**

TECHNICAL DATA

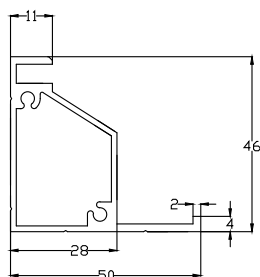
SUN EARTH®

PV-MODULE 190/195 W_p
MONOCRYSTALLINE TDB 125x125-72-P

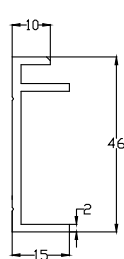
DIMENSIONS



Frame long side



Frame short side



LIMITS

Max. system voltage (IEC):	1000 VDC
Max. reverse-current I _R :	10 A
Operating temperature (environment):	-40 °C up to +85 °C
Max. hail resistance:	25 mm at 23 m/s
Max. wind resistance:	2400 Pa
Max. snow load (front):	5400 Pa
Application class:	A
Fire resistance class:	C
Safety class:	II

TRANSPORT INFORMATION

Packaging unit:	22 per carton
Packaging unit size:	(1620 x 1080 x 865) mm
Packaging unit weight:	370 kg
Packaging unit per 40' container*:	28 cartons (616 modules)
*190 W _p -Modules could differ: 10 per carton; 169 kg; 58 cartons	

ELECTRICAL DATA (STC)

Max. power (P _{mpp}):	190 W	195 W
Max. voltage (U _{mpp}):	36,6 V	36,8 V
Max. current (I _{mpp}):	5,20 A	5,30 A
Open circuit voltage (U _{oc}):	45,0 V	45,2 V
Short circuit current (I _{sc}):	5,42 A	5,49 A

ELECTRICAL DATA (NOCT)

Max. power (P _{mpp}):	139,1 W	142,7 W
Max. voltage (U _{mpp}):	33,3 V	33,5 V
Max. current (I _{mpp}):	4,18 A	4,26 A
Open circuit voltage (U _{oc}):	41,7 V	41,9 V
Short circuit current (I _{sc}):	4,39 A	4,45 A

ELECTRICAL DATA (general)

Cell temperature (T _{NOCT}):	46 °C
Module efficiency:	14,9% 15,3%
Tolerance of performance:	-0W up to +5W

- STC-Irradiation: 1000 W/m²; AM: 1,5; T_C: 25 °C
- NOCT-Irradiation: 800 W/m²; T_A: 20 °C; wind speed: 1 m/s
- Average reduction of module efficiency at decreasing irradiation from 1000 W/m² to 200 W/m² (at AM: 1,5 & T_C: 25 °C) ≤ 4,5% - according EN 60904-1

GENERAL CHARACTERISTICS

Composition:	72 (125 x 125 mm) monocrystalline silicon solar cells per module; 3 bypass-diodes; encapsulant EVA; rear cover TPT
Glass:	highly transparent, anti-reflective solar safety glass; 3,2 mm
Frame:	anodized aluminum
Junction box:	plastic; IP65;
Cable:	4 mm ² ; 900 mm
Connectors:	MC-T4-compatible

TEMPERATURE COEFFICIENTS

Power:	- 0,45 %/°C
Open circuit voltage:	- 0,32 %/°C
Short circuit current:	0,05 %/°C

MECHANICAL DATA

Height:	1580 mm
Width:	808 mm
Thickness:	46 mm
Weight:	16 kg

CERTIFICATES/STANDARDS

Standards: IEC 61215; IEC 61730; ISO 9001; ISO 14001
Conformity: Datasheet according to DIN EN 50380